



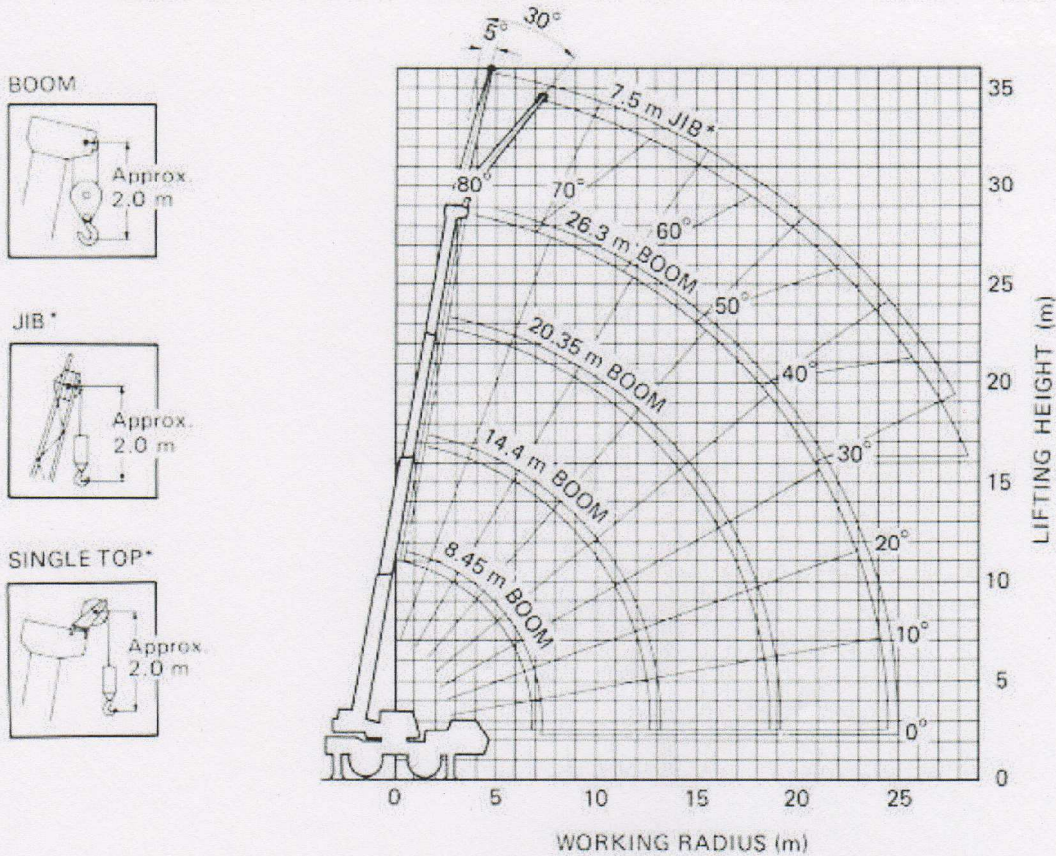
TADANO
HYDRAULIC ALL TERRAIN CRANE
AR-300E

33-ton capacity (30 metric tons)



WORKING RADIUS-LIFTING HEIGHT

SPEC. No. AR-300E-1-20101/EU-13/E

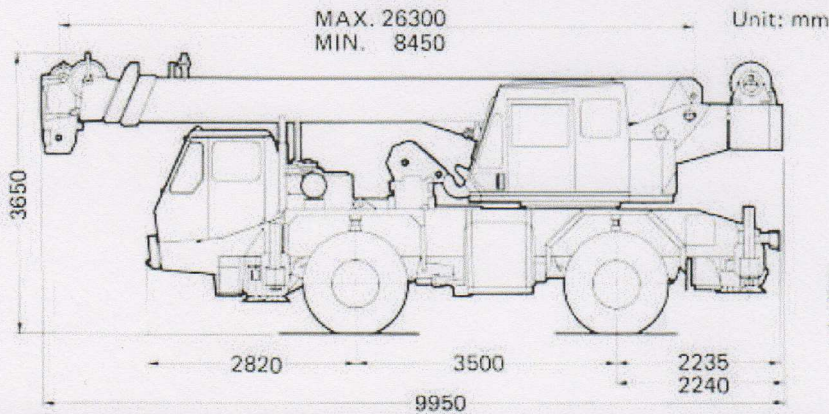


NOTE:

The above lifting heights and boom angles are based on a straight (unladen) boom, and allowance should be made for boom deflection obtained under laden conditions.

* optional

DIMENSIONS



Overall width	2,500 mm
Tail swing radius	2,890 mm
Tread (track)—Front	2,065 mm
—Rear	2,065 mm

An asterisk(*) denotes optional equipments.
Specifications are subject to change without notice.
Indicated SPEC. No. means machine fitted with all the optional equipments.

TADANO

TADANO LTD.

4-12, Kamezawa 2-chome,
Sumida-ku, Tokyo 130, Japan
TEL.: Tokyo (03) 621-7777
FAX.: Tokyo (03) 621-7785
TLX.: J23755 TADANO
CABLE: TADANIRCO TOKYO

Printed in Japan SHTT-1

TOTAL RATED LOADS

SPEC. No. AR-300E-1-20101/EU-13/E

ON OUTRIGGERS

Unit: kg

Outriggers fully extended (360°)								
B \ A					E \ C	7.5m		
	8.45m	14.4m	20.35m	26.3m		D	5°	30°
3.0m	30,000	17,000			80°	3,000	2,000	
3.5m	23,750	17,000	9,000		75°	3,000	2,000	
4.0m	20,500	15,500	9,000		70°	3,000	2,000	
4.5m	17,900	14,200	9,000	6,800	65°	2,500	1,850	
5.0m	15,900	13,200	9,000	6,800	60°	2,100	1,700	
5.5m	14,200	12,200	9,000	6,800	55°	1,600	1,450	
6.0m	12,800	11,400	9,000	6,800	50°	1,350	1,250	
6.5m	11,600	10,600	8,500	6,800	45°	1,150	1,050	
7.0m		9,900	8,100	6,800	40°	900	850	
8.0m		8,200	7,300	6,100	35°	700	700	
9.0m		6,750	6,600	5,500	30°	550	550	
10.0m		5,650	6,000	5,000	DIN 15019.2 - 75%			
11.0m		4,800	5,100	4,600				
12.0m		4,100	4,400	4,200				
13.0m			3,850	3,850				
14.0m			3,350	3,550				
15.0m			2,950	3,150				
16.0m			2,600	2,800				
17.0m			2,300	2,500				
18.0m			2,000	2,200				
19.0m				1,950				
20.0m				1,750				
22.0m				1,400				
24.0m				1,100				
24.5m				1,000				

- A: Boom length
- B: Working radius
- C: Jib* length
- D: Jib* offset
- E: Boom angle

NOTES FOR "ON OUTRIGGERS" TABLE

- Total rated loads shown in the table are based on condition that crane is set on firm level surface. Those above bold lines are based on crane strength and those below, on its stability.
- Total rated loads below bold lines do not exceed 75% of tipping load.
- The weight of the hook (270 kg for 30 ton capacity, 60 kg for 3.75 ton capacity*), slings and all similarly used load handling devices must be added to the weight of the load.
- For total rated load of single top*, reduce the 200 kg from the relevant boom total rated load. Total rated load of single top* should not exceed 3,750 kg.
- Standard number of part lines for each boom length is as shown below. Load per line should not surpass 3,750 kg.

Boom length (m)	8.45	14.4	20.35	26.3	Jib*/Single top*
No. of part lines	8	6	4	4	1

* optional

TOTAL RATED LOADS

SPEC. No. AR-300E-1-20101/EU-13/E

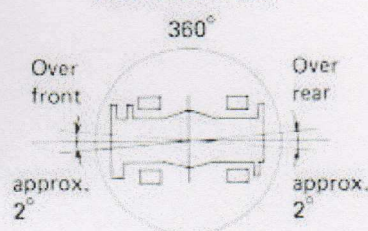
ON TIRES (WITHOUT OUTRIGGERS)

14.00R24 tire, Unit: kg

Stationary

B	Over rear			360°			Over front		
	8.45m	14.4m	20.35m	8.45m	14.4m	20.35m	8.45m	14.4m	20.35m
3.0m	9,700	7,700		7,000	6,900		10,000	9,800	
3.5m	9,400	7,700	6,000	5,850	5,450	4,800	10,000	9,800	5,600
4.0m	7,800	7,500	6,000	4,850	4,500	4,800	10,000	9,800	5,600
4.5m	6,600	6,400	6,000	4,100	3,750	4,000	10,000	9,800	5,600
5.0m	5,650	5,400	5,900	3,450	3,150	3,400	10,000	9,800	5,600
5.5m	4,900	4,650	5,000	2,900	2,600	2,850	10,000	9,800	5,600
6.0m	4,350	4,050	4,400	2,500	2,200	2,550	9,700	9,500	5,600
6.5m	3,800	3,550	3,900	2,100	1,900	2,200	8,100	7,750	5,600
7.0m		3,100	3,450		1,500	1,900		6,500	5,600
8.0m		2,400	2,750		1,000	1,400		4,950	5,500
9.0m		1,900	2,200		600	1,000		3,950	4,300
10.0m		1,500	1,800			700		3,100	3,500
11.0m		1,150	1,450					2,500	2,850
12.0m		800	1,150					2,050	2,400
13.0m			950						2,000
14.0m			750						1,650
15.0m			550						1,400
16.0m									1,150
17.0m									900
18.0m									750

WORKING AREA



Creep

B	Over rear			360°			Over front		
	8.45m	14.4m	20.35m	8.45m	14.4m	20.35m	8.45m	14.4m	20.35m
3.0m	8,150	6,600		5,900	5,750		8,700	8,400	
3.5m	7,360	6,600	5,200	5,150	4,800	4,200	8,700	8,400	4,900
4.0m	6,650	6,500	5,200	4,300	3,950	4,200	8,700	8,400	4,900
4.5m	5,850	5,650	5,200	3,600	3,300	3,550	8,700	8,400	4,900
5.0m	5,000	4,750	5,200	3,050	2,750	3,000	8,700	8,400	4,900
5.5m	4,350	4,100	4,400	2,550	2,300	2,500	8,550	8,400	4,900
6.0m	3,850	3,550	3,900	2,200	1,950	2,250	7,750	7,550	4,900
6.5m	3,350	3,150	3,450	1,850	1,650	1,950	7,000	6,850	4,900
7.0m		2,750	3,050		1,400	1,650		5,750	4,900
8.0m		2,100	2,400		1,000	1,200		4,350	4,900
9.0m		1,650	1,950		600	900		3,500	3,800
10.0m		1,300	1,550			650		2,750	3,100
11.0m		1,000	1,250					2,200	2,500
12.0m		750	1,000					1,800	2,100
13.0m			800						1,750
14.0m			600						1,450
15.0m									1,200
16.0m									1,000
17.0m									800
18.0m									700

Without outriggers "Over front" and "Over rear" operation should be performed within 2 degrees according to the diagram.

A: Boom length B: Working radius

NOTES FOR "ON TIRES" TABLES

- Total rated loads shown in the tables are based on condition that crane is set on firm level surface, with suspension lock applied. Those above bold lines are based on tire capacity and those below, on crane stability. They are based on actual working radii increased by tire deformation and boom deflection.
- "STATIONARY" load capacities do not exceed 75% of tipping loads. "CREEP" load capacities do not exceed 66 2/3% of tipping loads.
- The weight of the hook (270 kg for 30 ton capacity), slings and all similiary used load handling devices must be added to the weight of the load.
- Without outriggers liftings with "26.3 m boom", with "26.3 m boom + 7.5 m jib*" and with "Single top*" are not permitted.
- CREEP is motion for crane not to travel more than 60 m in any 30 min. period and to travel at the speed of less than 1.6 km/h.
- During CREEP duties travel slowly and keep the lifting load as close to the ground as possible, and especially avoid any abrupt steering, accelerating or braking.
- Do not operate the crane while carrying the load.
- Tires should be inflated to their correct air pressure of 10.2 kg/cm².

* optional